

Stock Capture



Set Up Guide

Barcode Scanning for:

- Stock takes
- Receipt stock from production & suppliers
- Issue stock to job and assembly orders
- Transfer stock between warehouses & locations

Developed for use with :



For more information contact your Ostendo Partner or

Solution Management Ltd. support@solutionm.co.nz

www.solutionm.co.nz 64 9 446-1204

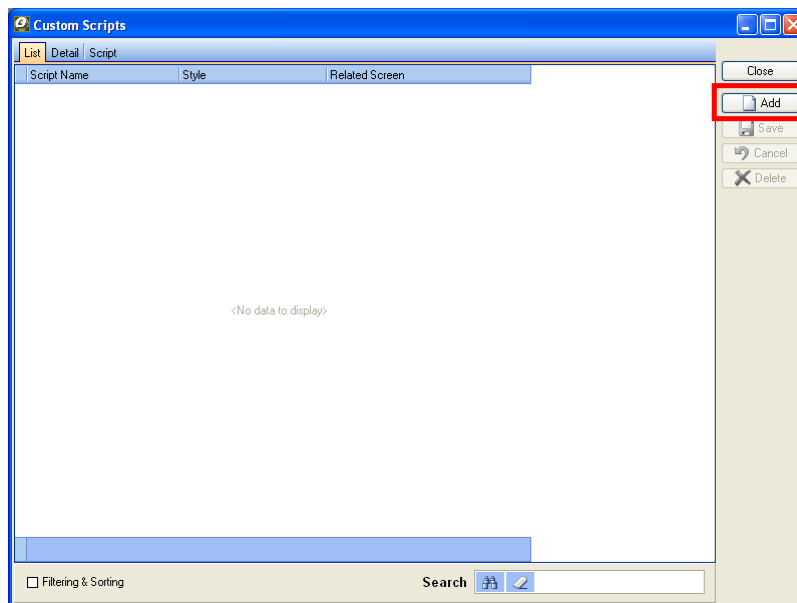
STOCK CAPTURE - SETUP GUIDE

REQUIRED FILES

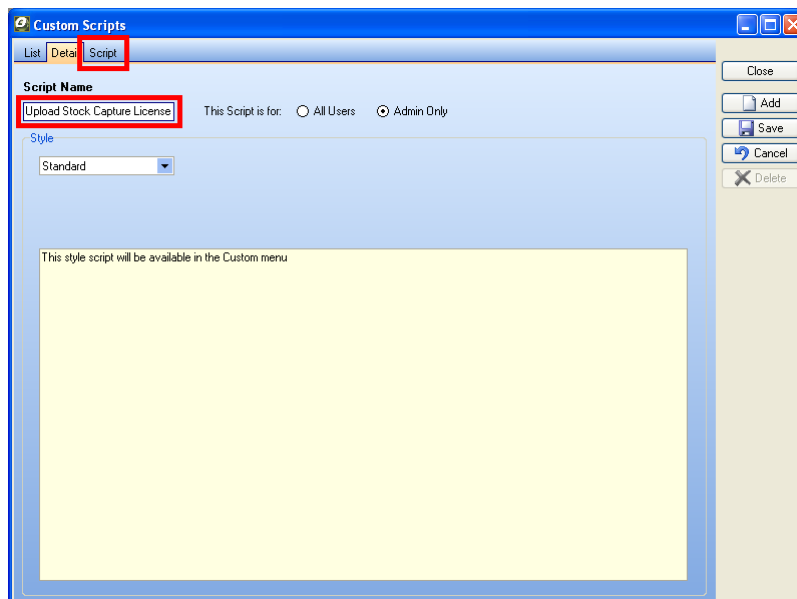
- License – i.e. 'Licenses for company name (Valid to Date).log' or similar
- Script – i.e. 'Stock Capture Version.txt'
- Data Screen – i.e. 'Stock Capture Version.dat'

LOADING THE STOCK CAPTURE LICENSE

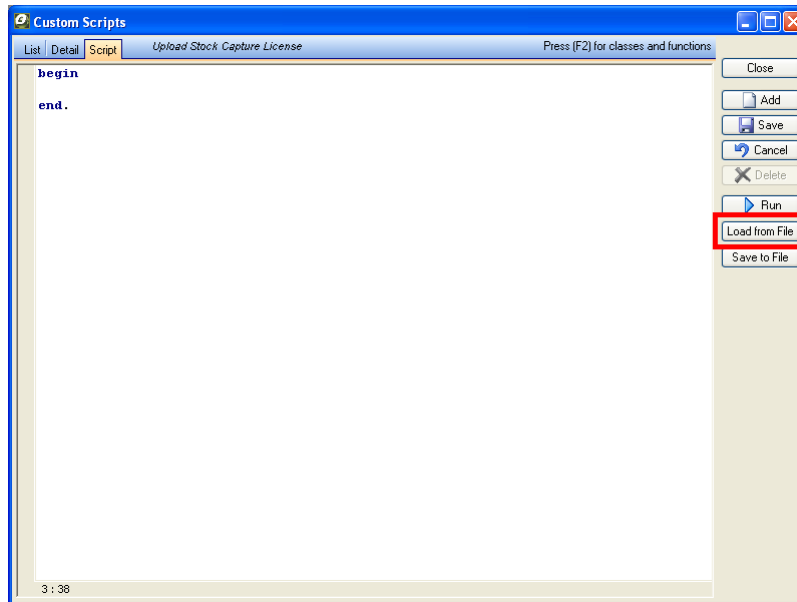
1. Bring up the 'Custom Scripts' screen within Ostendo by selecting 'Custom Scripts' under the 'File' menu, and select 'Add' on the right hand side of the screen.



2. Enter 'Upload Stock Capture License' or similar for the 'Script Name', and then select the 'Script' tab.



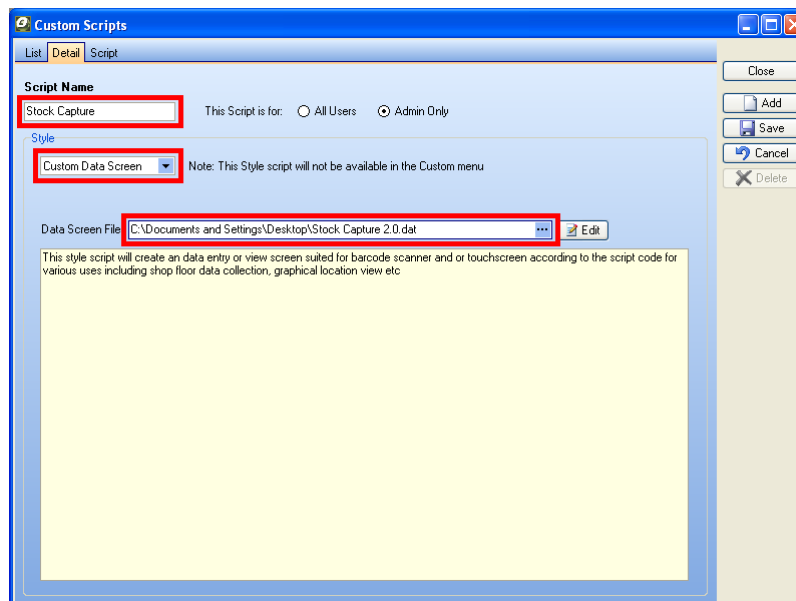
3. On the 'Script' tab, select 'Load from File' and select your stock capture license file, typically called '.Licenses for company name (Valid to Date).log' or similar.




4. Select 'Run' on the right hand side of the screen to run the script; you will be given a message on successful completion of the script.
5. The Stock Capture license has now been loaded. If you wish you can delete the license script in Ostendo.

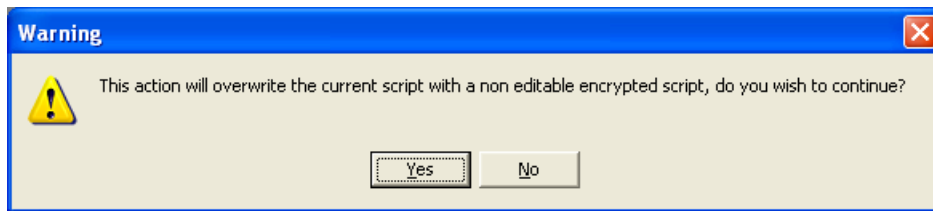
LOADING THE STOCK CAPTURE DATA SCREEN

1. Create a new script by following step 1 of 'Loading the Stock Capture License'.
2. Set the 'Script Name' to 'Stock Capture' or similar, and the 'Style' to 'Custom Data Screen'.



3. Use the  button next to 'Data Screen File' to browse for the data screen file to be used, which will be the stock capture data screen file, typically called 'Stock Capture Version.dat' or similar.

4. On the 'Script' tab, select 'Load from File' and select the stock capture script file, typically called 'Stock Capture Version.txt' or similar. You may be given a warning about overwriting the script with a non-editable encrypted script, if so select 'Yes'.



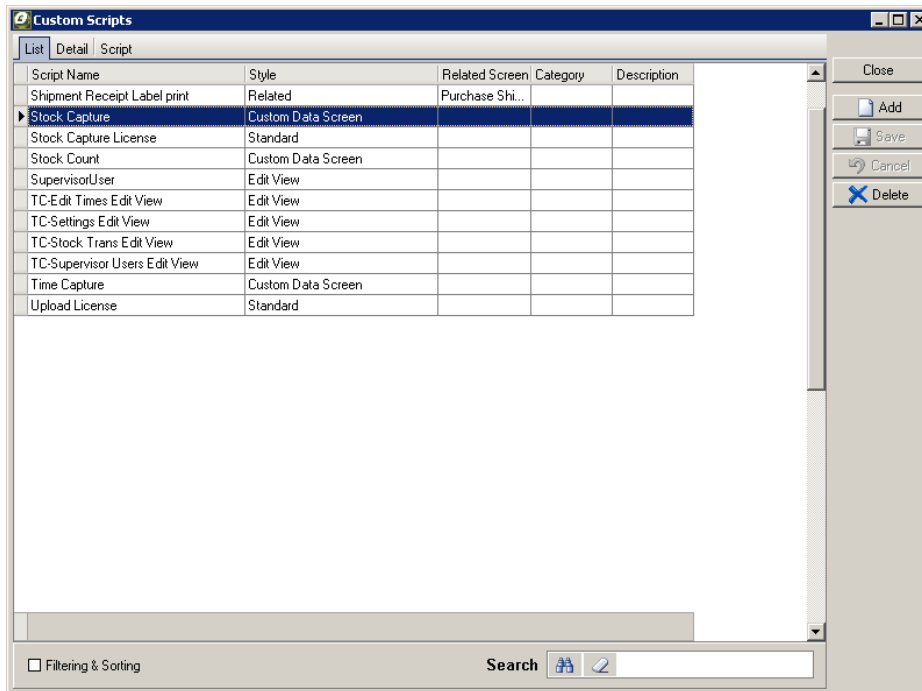
5. Select 'Save' on the right hand side of the screen and close the 'Custom Scripts' screen.
6. The Stock Capture data screen has now been loaded and can be accessed under the 'Data Screens' submenu of the 'Custom' menu within Ostendo.

VERSION UPDATES

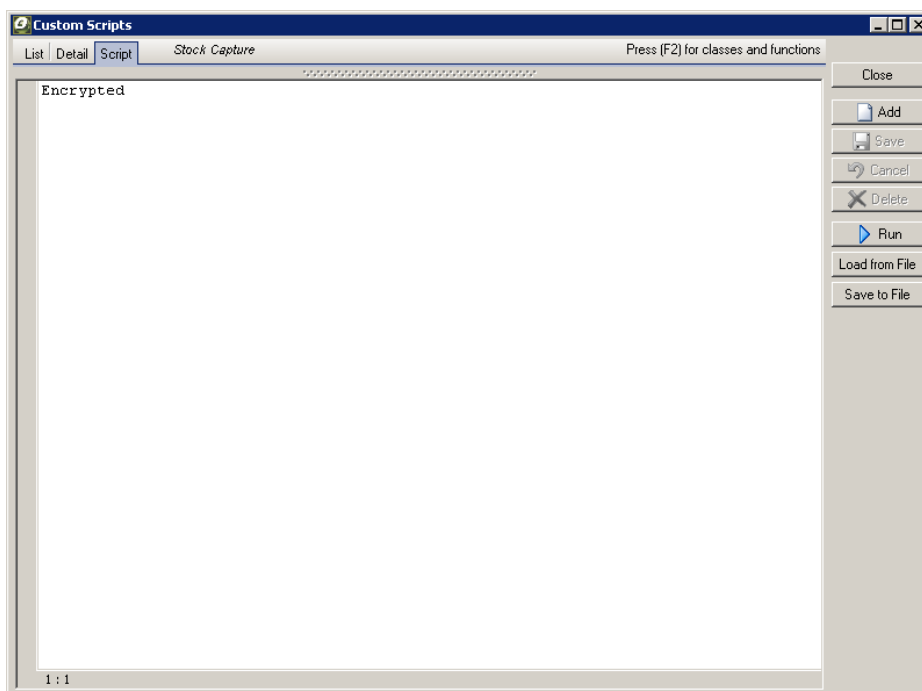
From time to time additional Stock Capture functionality will be provided as a “Version Update”.

Version updates require loading the new script from the file provided, and loading a new Data Screen File if it comes with the update.

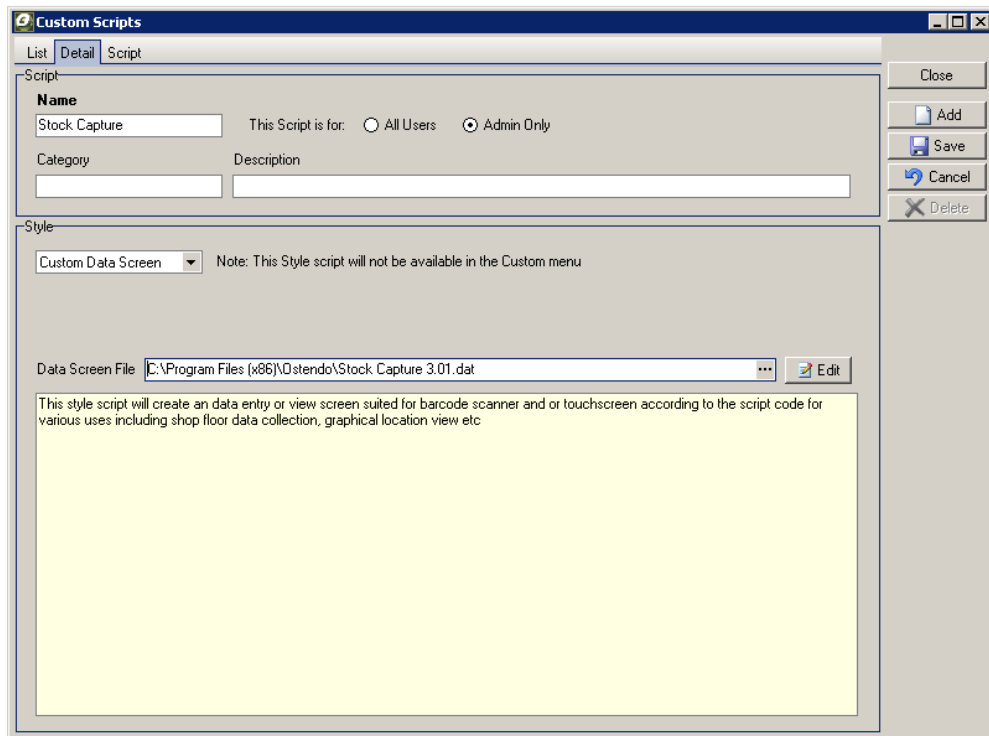
1. Locate the existing Stock Capture Script



2. Load the new Stock Capture Script from the file provided.



3. Update the new Data Screen File if provided.



DATABASE CHANGES

For Stock Capture – No additional fields or tables are added to the Ostendo Database.