

Time Capture



Time Entry for:

- Attendance & Job Time
- Shop Floor Data Collection
- Barcode, Touch Screen and Mouse/Keyboard compatible

Set Up Guide

Developed for use with :



For more information contact your Ostendo Partner or

Solution Management Ltd. support@solutionm.co.nz

www.solutionm.co.nz 64 9 446-1204

TABLE OF CONTENTS

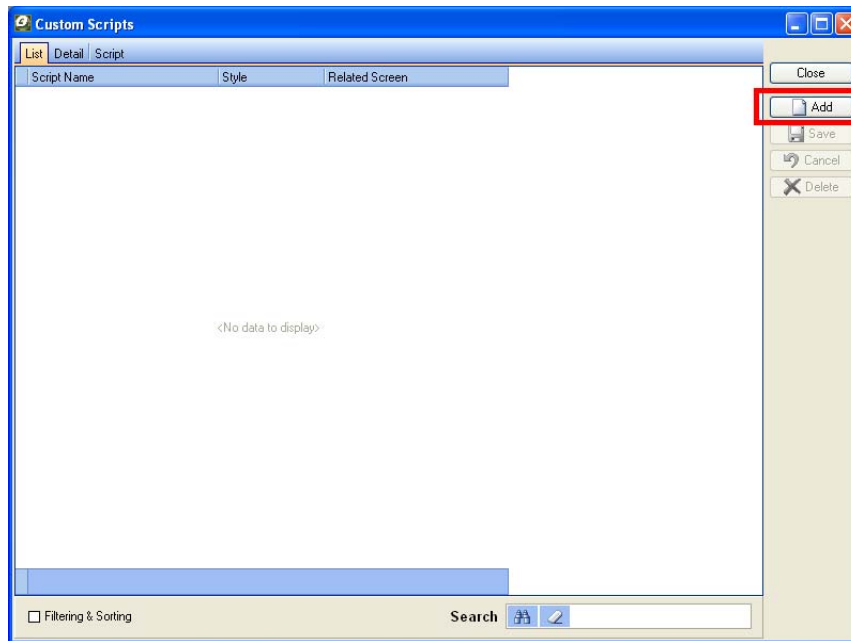
| | |
|-------------------------------|---|
| Extracting Files | 2 |
| Uploading License | 2 |
| Installing Time Capture | 4 |

EXTRACTING FILES

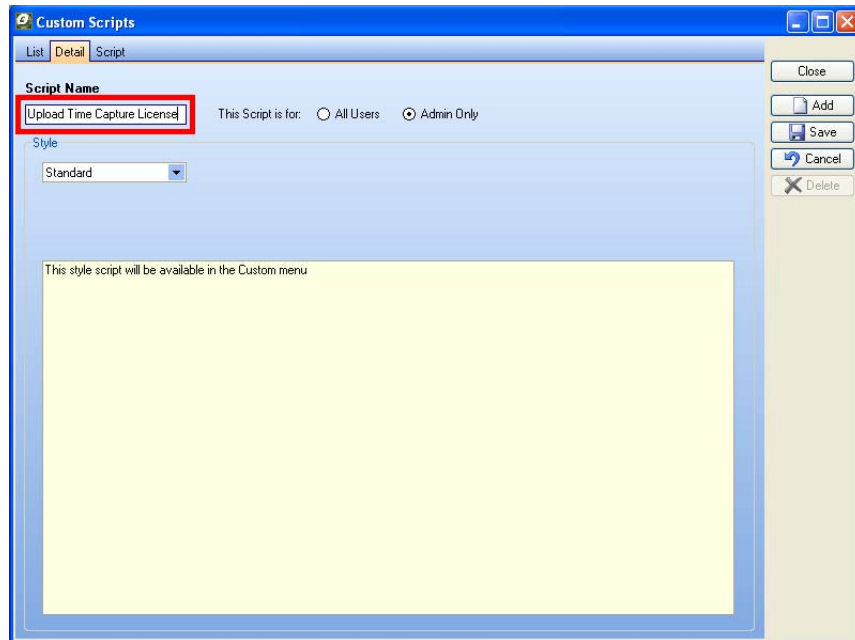
Extract the files from the provided .zip file into the base directory of Ostendo, e.g. 'C:/Program Files/Ostendo'.

UPLOADING LICENSE

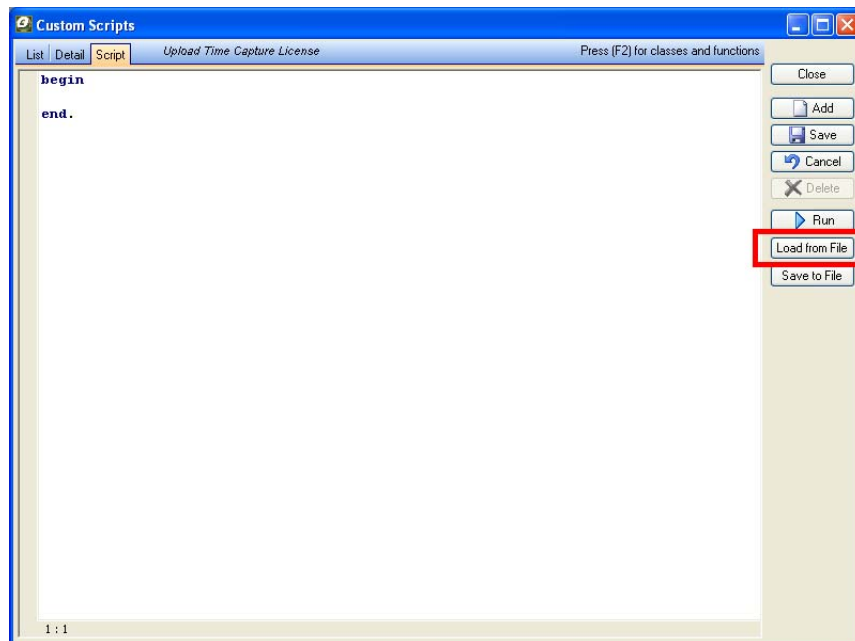
Open the 'Custom Scripts' screen by selecting 'Custom Scripts' under the 'File' menu. Once the screen is open, click 'Add' on the right hand side.



Enter 'Upload Time Capture License' or similar for the name, and leave the script style as 'Standard'.



Switch to the 'Script' tab and click 'Load from File' on the right edge of the screen, when prompted for a file select the 'Licenses for <Your Company Name> (valid to <Expiry Date>).txt' file included with the release package.

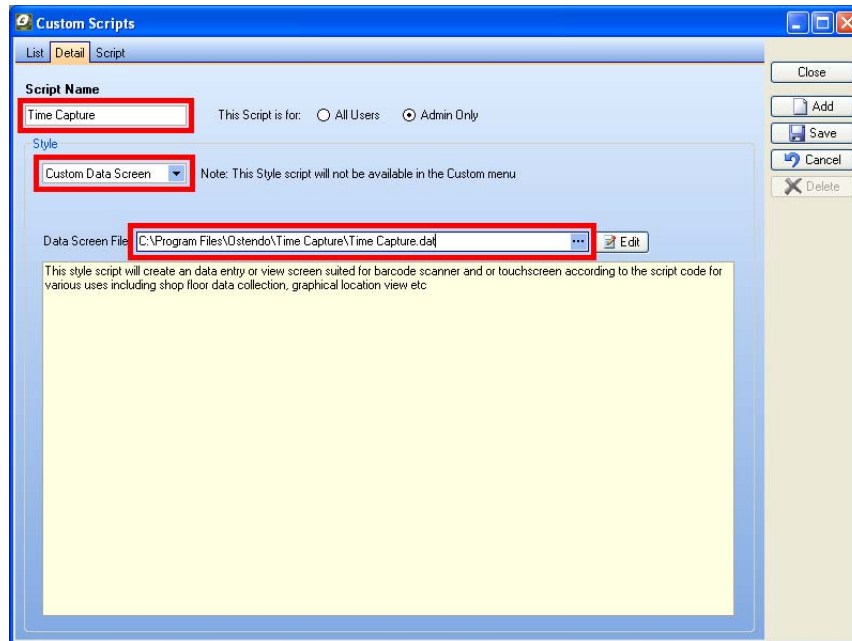


After the script is imported click 'Run' on the right hand side and wait for a notification that the license has been successfully uploaded.

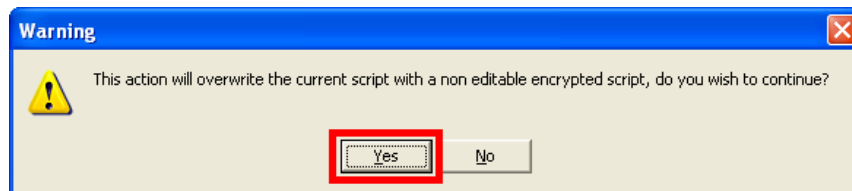
INSTALLING TIME CAPTURE

Open the 'Custom Scripts' screen by selecting 'Custom Scripts' under the 'File' menu. Once the screen is open, click 'Add' on the right hand side.

Enter 'Time Capture' or similar for the name, change the script style to 'Custom Data Screen', and then set the Data Screen File field to the 'Time Capture.dat' file included in the release package.



Switch to the 'Script' tab and click 'Load from File' on the right edge of the screen, when prompted for a file select the 'Time Capture.txt' file included with the release. You may be given a warning about overwriting the script with a non-editable encrypted script, if so select 'Yes'.



Select 'Save' on the right hand side of the screen, the Time Capture screen has now been loaded.

You can access Time Capture from the 'Data Screens' sub menu under 'Custom' on the main Ostendo menu. When Time Capture is first run it will complete the remaining installation steps (Loading of additional fields, reports, edit views, etc).